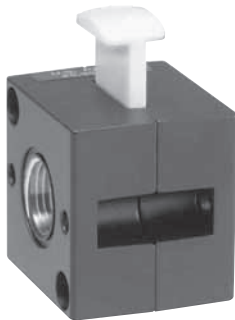


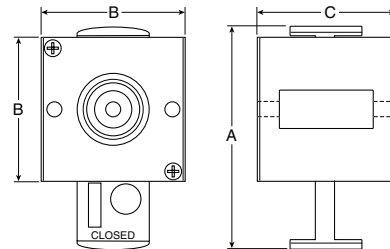
SV Shut-off Valve

Features

- Threaded Ports Allows Use In-line or with Other QUBE Modular FRL Components
- Accepts Customer Supplied Standard Single Padlock or Safety Lock for Multiple Lockout
- Conforms to OSHA Standard 29 CFR Part 10
- 3-Port, 2-Position Shutoff Valve Relieves Downstream Pressure when Closed
- SV Valves Can be Locked in the Closed Position Only
- Maximum Pressure: 300 PSIG



SV75 Shown



Port Size	SV35 Part Number	SV75 Part Number	SV105 Part Number
1/8	SV35-01	—	—
1/4	SV35-02	SV75-02	—
3/8	—	SV75-03	—
1/2	—	SV75-04	SV105-04
3/4	—	—	SV105-06

Kit Includes: (2) Machine Screws & (2) O-rings for mounting.

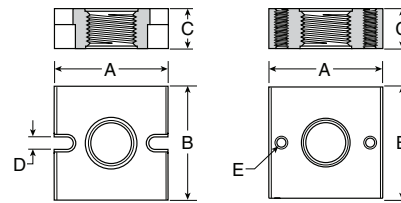
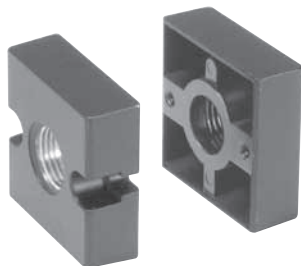
Series	A	B	C	Weight
SV35	2.50 (63.5)	1.63 (41.3)	1.56 (39.7)	.78 lb .35 kg
SV75	3.06 (77.8)	2.00 (50.8)	1.75 (44.5)	.95 lb .43 kg
SV105	4.19 (106.3)	2.69 (68.2)	2.13 (53.9)	1.7 lb .77 kg

Inches
(mm)

End Plates

Features

- Design Allows Removal or Installation of Basic Components without Direct Pipe Connections to the Components
- Each Series has End Plates One Port Size Larger than the Basic Units



Type 731

Type 732

Part Number	Type 0731	Type 0732	Contains		
			Screws	O-Rings	Application
PK3500-**	0	1	0	0	Shut-Off
PK3510-**	1	1	2	1	Filter or Lubricator
PK3520-**	1	—	2	1	R, B, FRL, BL with Shut-off
PK3530-**	2	—	4	2	R, B, FRL, BL
PK7500-**	0	1	0	0	Shut-Off
PK7510-**	1	1	2	1	Filter or Lubricator
PK7520-**	1	—	2	1	R, B, FRL, BL with Shut-off
PK7530-**	2	—	4	2	R, B, FRL, BL
PK1050-**	0	1	0	0	Shut-Off
PK1051-**	1	1	2	1	Filter or Lubricator
PK1052-**	1	—	2	1	R, B, FRL, BL with Shut-off
PK1053-**	2	—	4	2	R, B, FRL, BL

** 01 (1/8"); 02 (1/4"); 03 (3/8"); 04 (1/2"); 06 (3/4")

Series	Type	A	B	C	D	E
35	0731	1.59 (40.5)	1.59 (40.5)	0.90 (22.9)	0.17 (4.4)	—
35	0732	1.59 (40.5)	1.59 (40.5)	0.90 (22.9)	—	#8-32UNC-2B
75	0731	2.00 (50.8)	2.00 (50.8)	0.70 (17.9)	0.22 (5.6)	—
75	0732	2.00 (50.8)	2.00 (50.8)	0.70 (17.9)	—	#10-32UNF-2B
105	0731	2.69 (68.3)	2.69 (68.3)	1.00 (25.49)	0.27 (6.8)	—
105	0732	2.00 (50.8)	2.00 (50.8)	1.00 (25.49)	—	1/4-20UNC-2B

Inches
(mm)